

# Lower Thames Crossing

## 2.1 Location Plan (Clean version)

APFP Regulation 5(2)(o)

Infrastructure Planning (Applications:  
Prescribed Forms and Procedure)  
Regulations 2009

Volume 2

**DATE: August 2023**  
**DEADLINE: 3**

Planning Inspectorate Scheme Ref: TR010032  
Application Document Ref: TR010032/APP/2.1

**VERSION: 2.0**

# Lower Thames Crossing

## 2.1 Location Plan

### List of contents

	<b>Page number</b>
<b>1 Introduction .....</b>	<b>1</b>
<b>2 Schedule of Plans included in this application document .....</b>	<b>2</b>



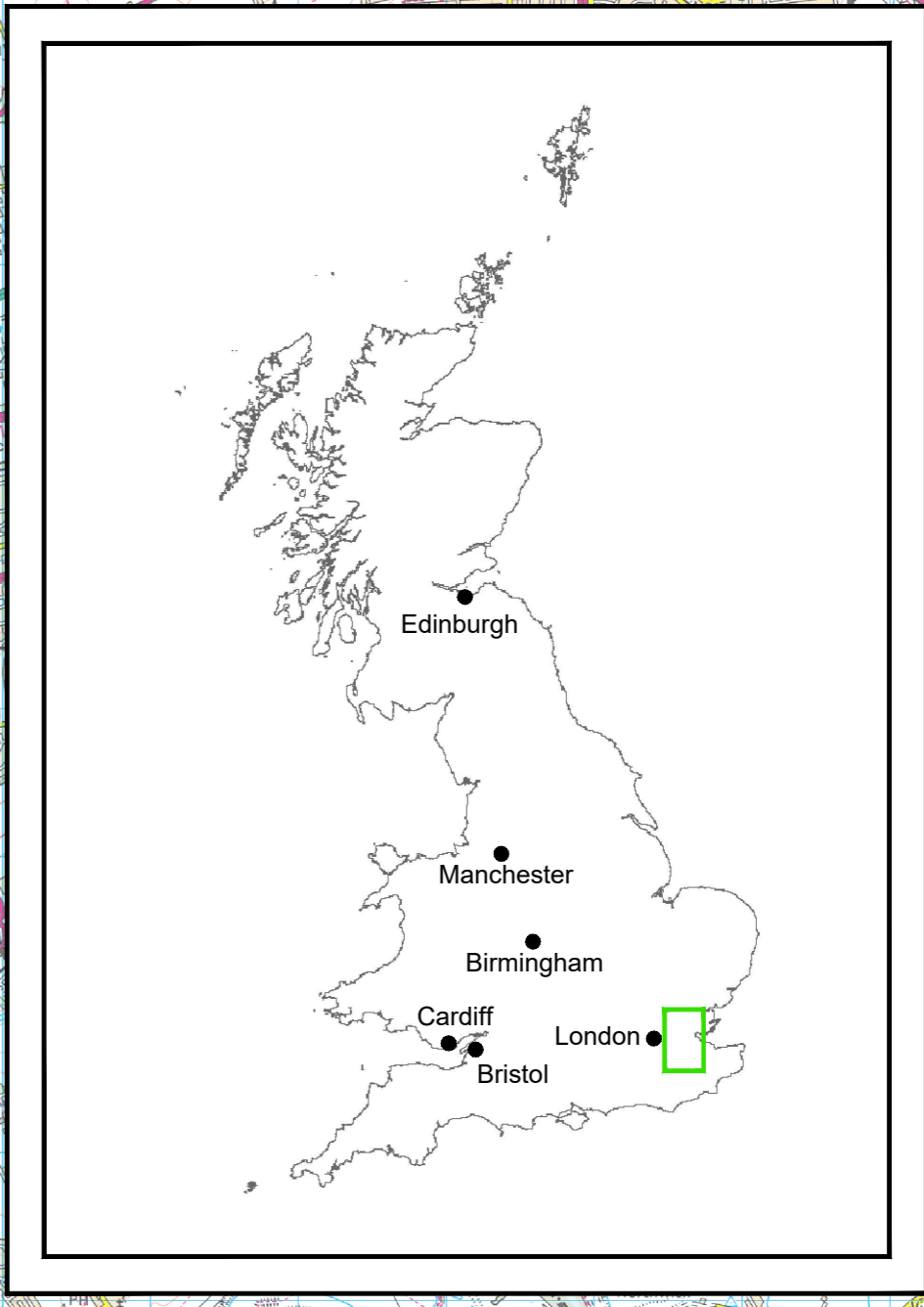
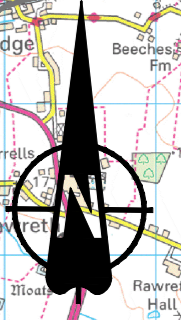
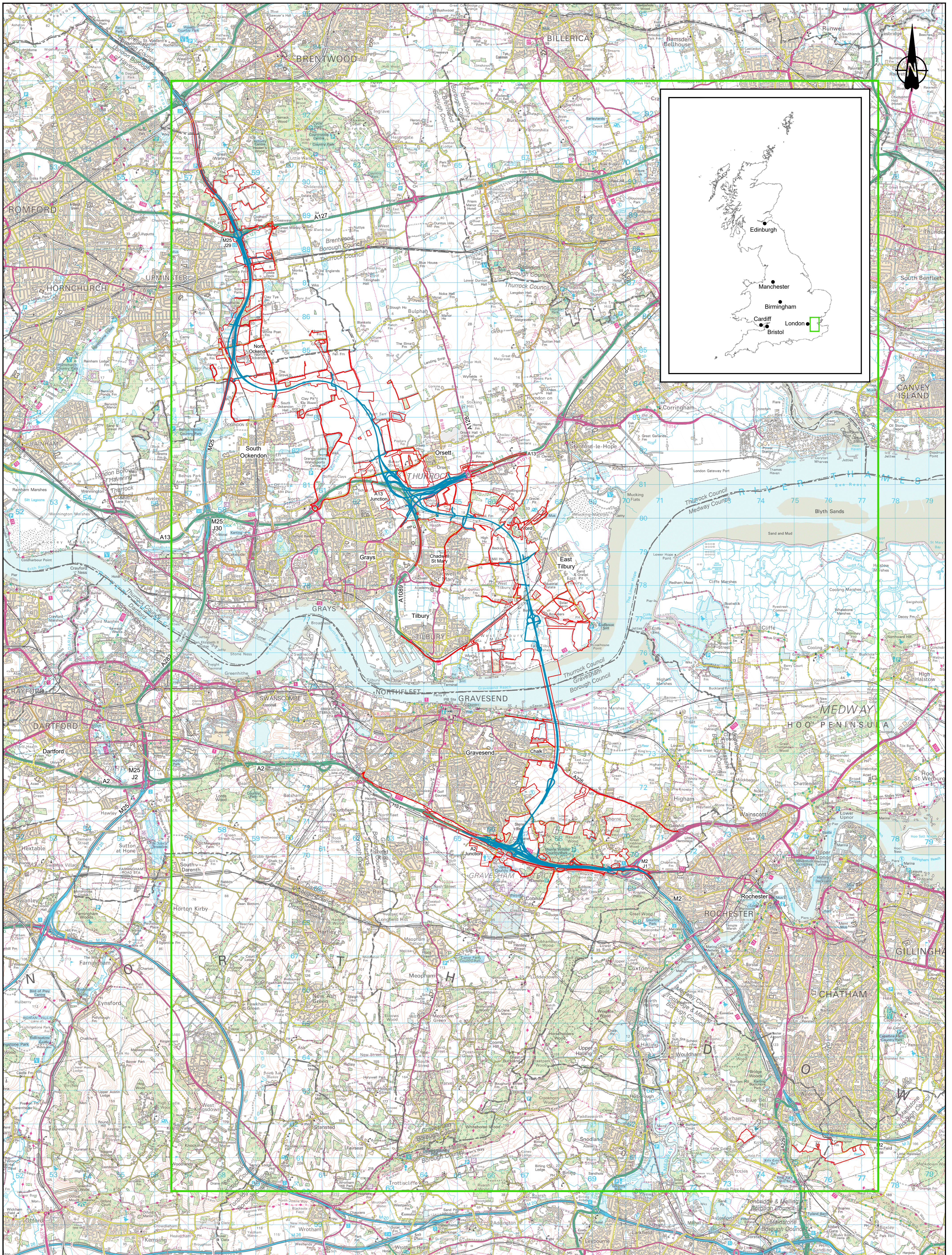
# 1 Introduction

- 1.1.1 This document is submitted to the Planning Inspectorate on behalf of the Secretary of State in relation to an application made by National Highways (the Applicant) under section 37 of the Planning Act 2008.
- 1.1.2 The application is for the grant of development consent for the A122 Lower Thames Crossing. Should development consent be granted, the draft A122 (Lower Thames Crossing) Development Consent Order (Application Document 3.1) (the draft Order) will be made by the Secretary of State (subject to any modifications considered appropriate).
- 1.1.3 This document comprises part of the suite of application documentation and is included in the application to comply with Regulation 5(2)(o) of the Infrastructure Planning (Applications: Prescribed Forms and Procedure) Regulations 2009, which requires:
- 5(2)(o) ‘any other plans, drawings and sections necessary to describe the proposals for which development consent is sought, showing details of design, external appearance, and the preferred layout of buildings or structures, drainage, surface water management, means of vehicular and pedestrian access, any car parking to be provided, and means of landscaping’.*
- 1.1.4 Although Regulation 5(2)(o) does not expressly stipulate that a location plan must be provided, Appendix One of the Planning Inspectorate’s Advice Note Six: Preparation and submission of application documents (November 2019: version 8) suggests that a location plan may be included in the submission of a DCO application.
- 1.1.5 This plan has therefore been included in the application to identify the location of the Project in its wider geographical context. As a consequence, this plan uses a smaller scale than that prescribed in Regulation 5(3) of the 2009 Regulations so that the wider geographical context can be represented on a single sheet plan.
- 1.1.6 The Location Plan shows the Order Limits and relevant local authority boundaries for clarity. In this plan set, ‘the Order Limits’ mean the limits of lands to be acquired or used, permanently or temporarily, within which the authorised development may be carried out (see article 2 of the draft Order (Application Document 3.1)).
- 1.1.7 As this document has been informed by and is part of the application documentation, it should be read alongside the other application documents. In particular, the plans should be read alongside the draft Order (Application Document 3.1).
- 1.1.8 This plan has been updated for Deadline 3 to include the minor amendments as advised by the Examining Authority in Rule 9 [[PD-022](#)].

## 2 Schedule of Plans included in this application document

Document Title	Document Number	Revision
LOCATION PLAN REGULATION 5(2)(o)	TR010032/APP/2.1	P02

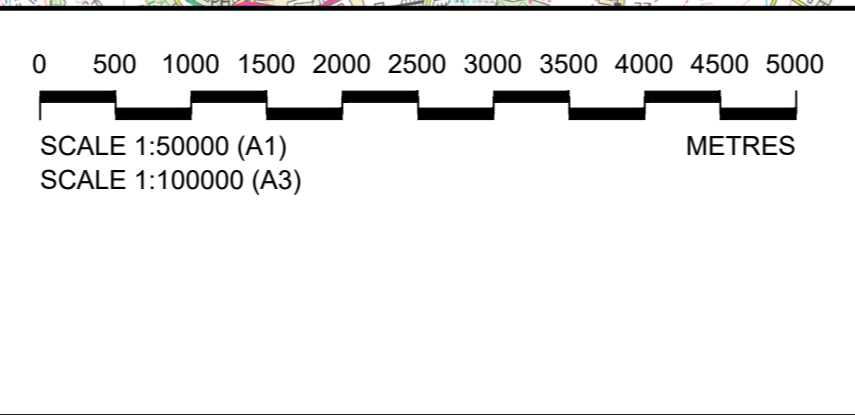




GP	RO	ASB
P01	S8	19/10/2022
P02	S8	24/08/2023
Rev	Status	Rev. Date
		Purpose of revision
		Drawn
		Chk'd
		Apprv'd

**LEGEND:**

- Order Limits
- Lower Thames Crossing
- Local Authority Boundary



Client: **national highways**

Project: **LOWER THAMES CROSSING**

Status	DCO Examination	Original Size	Revision
Application Document Number	TR010032/APP/2.1	A1	P02
Drawing title	LOCATION PLAN REGULATION 5(2)(c)		
Drawing Number	HE540039-CJV-BOP-ZZZ_BD000000_-DR-BL-10000		



If you need help accessing this or any other National Highways information, please call **0300 123 5000** and we will help you.

© Crown copyright 2023.

You may re-use this information (not including logos) free of charge in any format or medium, under the terms of the Open Government Licence. To view this licence:

visit [www.nationalarchives.gov.uk/doc/open-government-licence/](http://www.nationalarchives.gov.uk/doc/open-government-licence/)

write to the **Information Policy Team, The National Archives, Kew, London TW9 4DU**, or email [psi@nationalarchives.gsi.gov.uk](mailto:psi@nationalarchives.gsi.gov.uk).

Mapping (where present): © Crown copyright and database rights 2023 OS 100030649. You are permitted to use this data solely to enable you to respond to, or interact with, the organisation that provided you with the data. You are not permitted to copy, sub-licence, distribute or sell any of this data to third parties in any form.

If you have any enquiries about this publication email [info@nationalhighways.co.uk](mailto:info@nationalhighways.co.uk) or call **0300 123 5000\***.

\*Calls to 03 numbers cost no more than a national rate call to an 01 or 02 number and must count towards any inclusive minutes in the same way as 01 and 02 calls.

These rules apply to calls from any type of line including mobile, BT, other fixed line or payphone. Calls may be recorded or monitored.

Printed on paper from well-managed forests and other controlled sources when issued directly by National Highways.

Registered office Bridge House, 1 Walnut Tree Close, Guildford GU1 4LZ

National Highways Limited registered in England and Wales number 09346363